



DUKEDORM

STUDENT ACCOMMODATION



INDEX

03	STUDENT ACCOMMODATION IN PORTUGAL
06	DUKEDORM STUDENT ACCOMMODATION
07	About us
08	The Team
09	Services
10	ROOMS
11	Concept
12	Studio
13	Suite
14	Features
15	PIPELINE
16	Leiria
18	Coimbra
20	CONTACTS





Student Accommodation in Portugal



STUDENT ACCOMMODATION IN PORTUGAL

In recent years, there has been a rise in the number of university students, particularly from overseas, who are drawn to the lifestyle, weather, and reputable universities in Portugal. As a result of the limited availability of purpose-built student accommodation (PBSAs), Portugal is becoming an appealing market for the development and operation of student housing assets.



STUDENT ACCOMMODATION IN PORTUGAL

Last 3 Years Compound Annual Growth Rate (CAGR)

+4.0%

Total Students

+6.2%

Foreign Students

+3.5%

National Students

Top 5 International Students Nationalities



26.3%



9.0%



8.4%



7.6%



5.9%

Source: CBRE REIB Research, DGEEC



DukeDorm- Student Accommodation



ABOUT US

Dukedorm Student Accommodation aims at providing contemporary, friendly, and high-quality living spaces that enable students to form strong bonds while pursuing their studies. Furthermore, we prioritize exceptional locations for our properties, allowing students to immerse themselves in the local culture.

Live like a Duke.

Sleep like a log.



THE TEAM



Rui Alpalhão



Tânia Marreiros Silva



Tiago Mattos Aguas











**Catarina Miranda
Gonçalves**



Luís Pais dos Santos

SERVICES

-  High Speed WiFi
-  Private rooms with bathroom
-  Private kitchenette in all rooms
-  24-hour CCTV
-  24/7 laundry service
-  24/7 concierge
-  Study room
-  Cleaning Services





Rooms

CONCEPT

The creation of multifunctional, open-space rooms gives students greater flexibility in the use of space, allowing them to carry out different activities throughout the day in the same place.

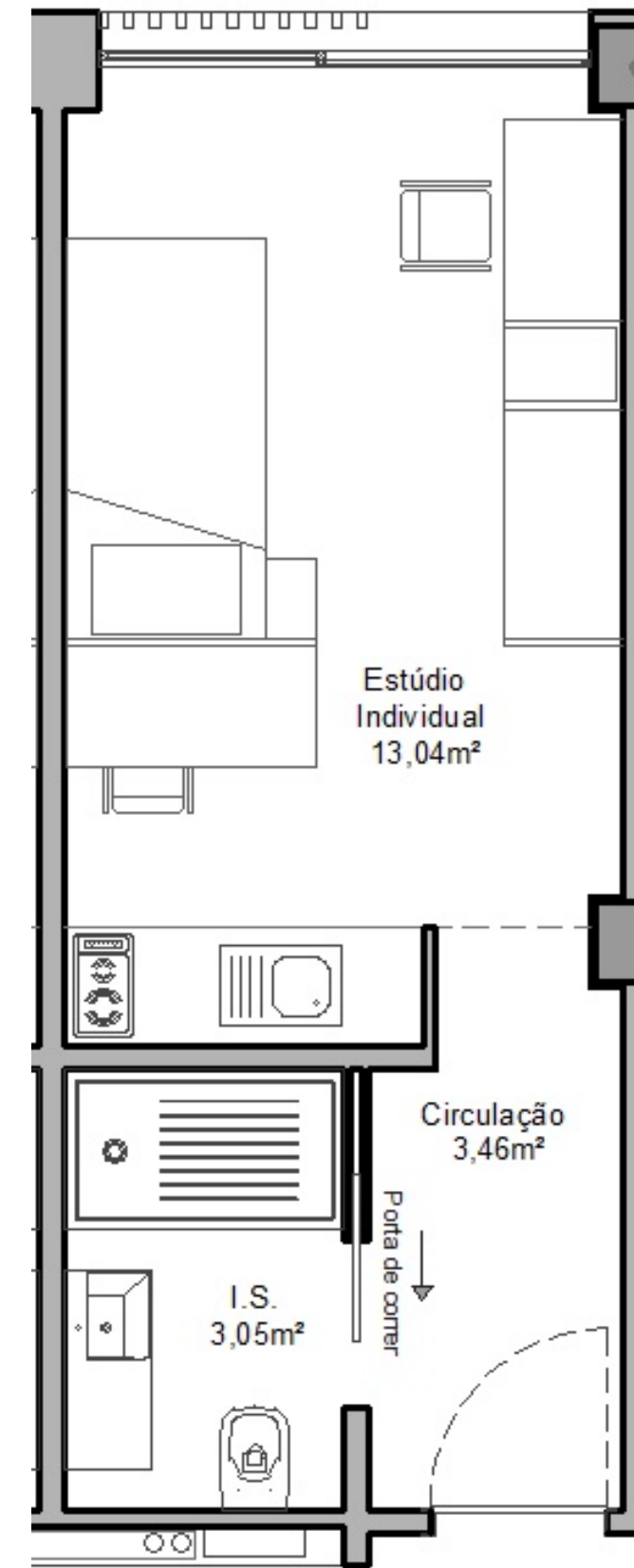
The rooms, with their minimalist décor, make it easier for students to personalize the environment. In addition, the spaces will also be welcoming through the use of natural materials and warm colors.



STUDIO

20m²

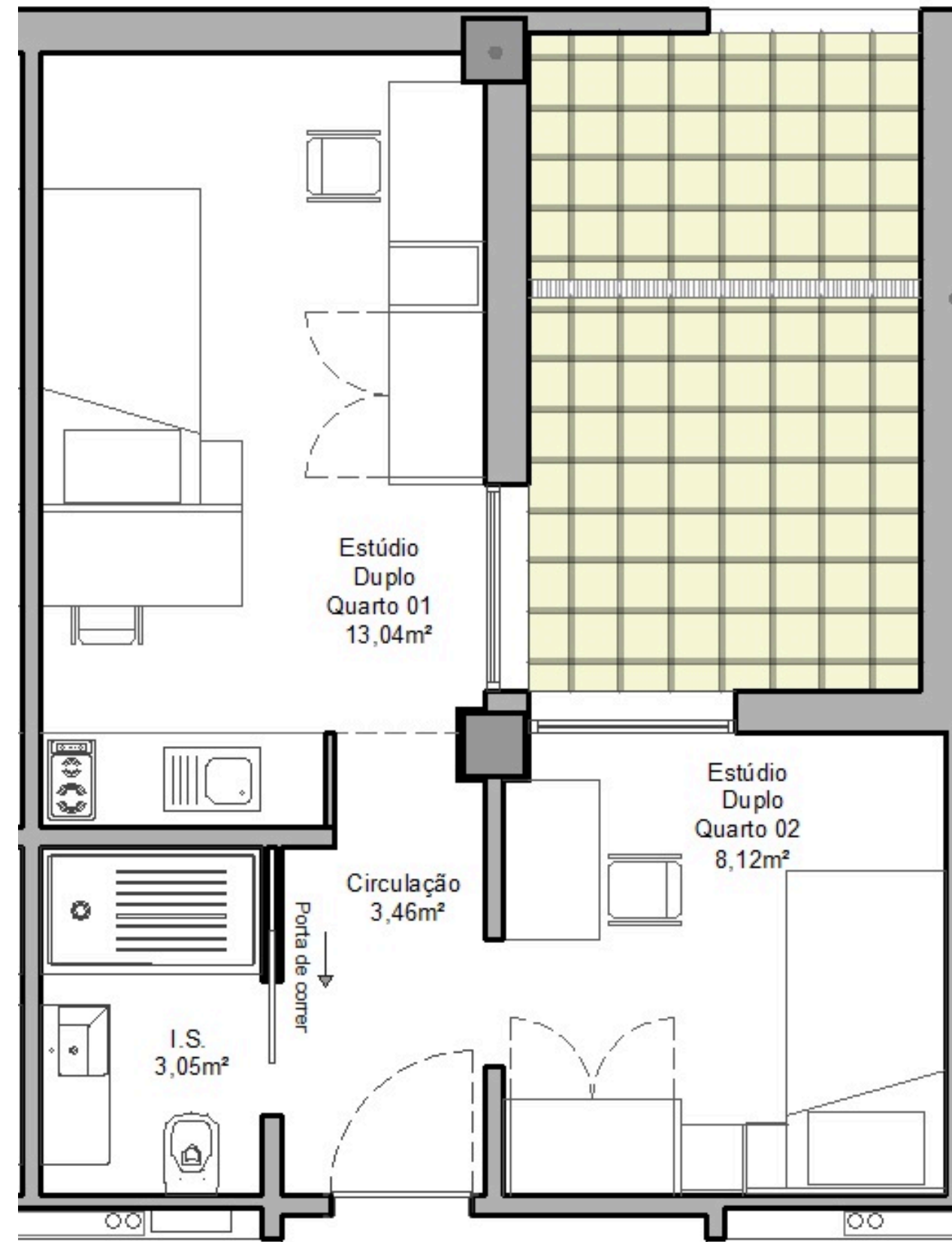
Our studios with private bathrooms offer a comfortable and well-equipped room with storage space, kitchenette and work area.



SUITE

30m² + 10 m² terrace

The premium rooms with a private bathroom, kitchenette and work area offer the possibility of converting the room into a double studio or for single use, allowing the student to host visiting family members.



FEATURES

STUDIOS

- Smart TV.
- Air conditioning.
- Shelving and storage spaces.
- Study table, chair and lamp.
- En-suite bathroom.
- Complete Kitchenette with:
 - Microwave;
 - Induction hob;
 - Refrigerator.

SUITE

- Smart TV.
- Air conditioning.
- Shelving and storage spaces.
- Study table, chair and lamp.
- En-suite bathroom.
- Lounge area with sofa and coffee table.
- Complete Kitchenette with:
 - Microwave;
 - Induction hob;
 - Refrigerator.



Pipeline



LEIRIA

Polytechnic Institute of Leiria:

- 3 universities
- 14,500 students, 1,600 of whom are international students
- 45 Master's degree courses
- 29 Bachelor's courses
- 29 Postgraduate courses
- 36 Professional Higher Technical Courses
- 1 PhD
- 4 Research Units



LEIRIA

📍 Av. da Comunidade Europeia

PBSA

Project under Licensing

ABC: 3.000 m²

76 units

66 studios

10 premium rooms



Laundry Service



Cleaning Service



Study Room



COIMBRA

University of Coimbra:

- 3 University Hubs | 8 Colleges
- 28,182 students, of which 5,390 are international students
- 139 Masters Courses
- 45 Bachelor's Courses
- 12 Integrated Masters
- 74 PhD
- 38 Research Centers



COIMBRA

📍 Rua da Nogueira

Rehabilitation

Licensed Project

ABC: 3.000 m²

62 units

37 studios

25 premium rooms



Laundry Service



Study Room



Cleaning Service



Keep in Touch

 www.dukedorm.pt

 info@dukedorm.pt

 21 310 36 20

 Av. Eng^o Duarte Pacheco, Torre 1, 15^o
1070-101 Lisboa

